

Our aesthetic, value-for-money, industrial lighting fixture, offering:

- elaborate design and first-class craftsmanship
- value for money – reliable quality at a favourable price
- fast and safe installation – with gear tray integrated into the diffuser
- flexible mounting brackets – for easy fitting



FIELD OF APPLICATION:

Thanks to the construction principles of the gasket, the closing system and the diffuser, our LED fixtures ensure a high grade of protection (IP65) against dust, contamination and water permeation. In accordance with their IP rating, they can be widely used to illuminate spaces with dusty and humid environment. Easy is an ideal option to illuminate underpass areas and parking lots.

When using outdoors, the fittings should be protected against direct sunlight and adverse weather conditions.

TECHNICAL DESCRIPTION AND BENEFITS:

- Housing: **available in PC** - injection moulded **Polycarbonate** (high mechanical strength and high heat and shock resistance) in light grey (RAL7035) colour (suitable for 850°C glow wire test, too).
 - Diffuser: **available in PC** - injection moulded **opalised Polycarbonate** (high mechanical strength and high heat and shock resistance).
- Other features:
- homogenous and well-balanced light dispersion
 - uniform lighting throughout the whole luminaire
 - non-glare illumination
- The gasket is made of extruded silicone.
 - Fixing the diffuser to the body: with stainless steel clips.
 - Gear tray (reflector): white powder coated steel sheet. It is integrated into the diffuser, thus enabling a cost efficient and user-friendly installation.
 - Electrical components: the adequate power supply is ensured with the electronic driver.

IP65

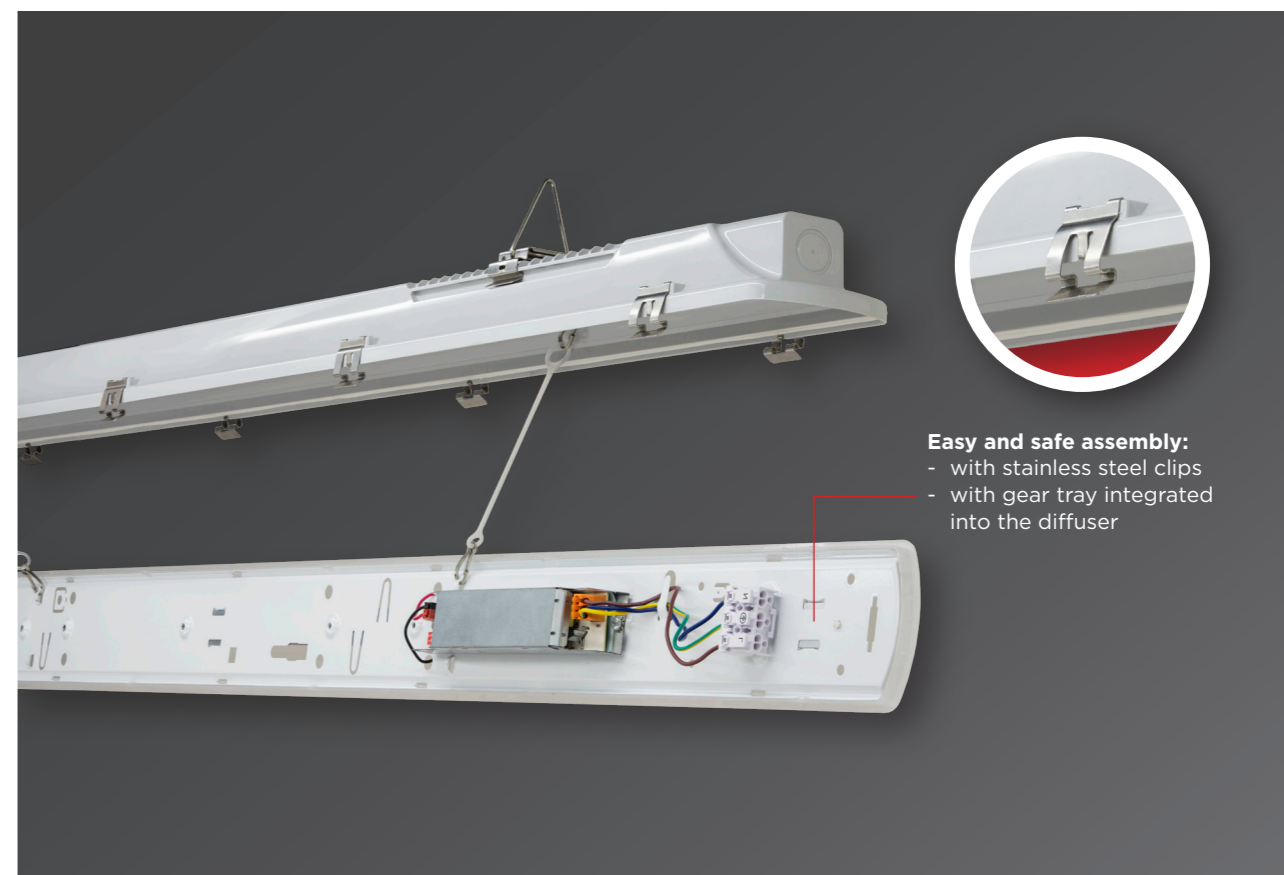
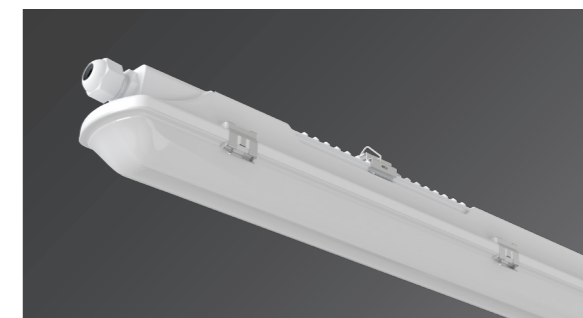


Options:



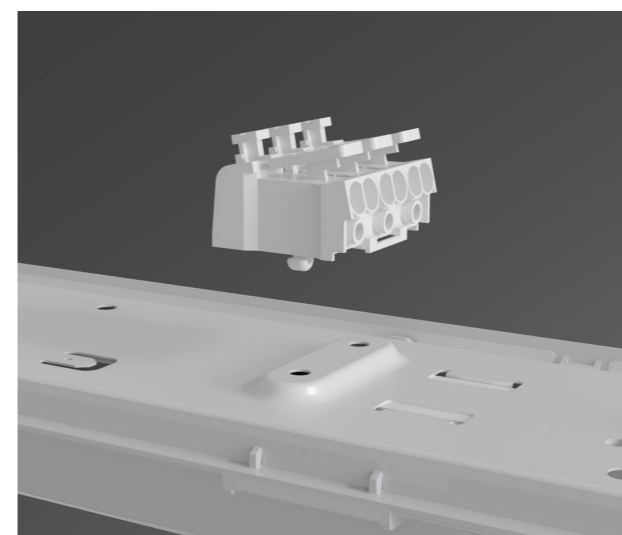
Main technical options

Elaborate design and first-class craftsmanship

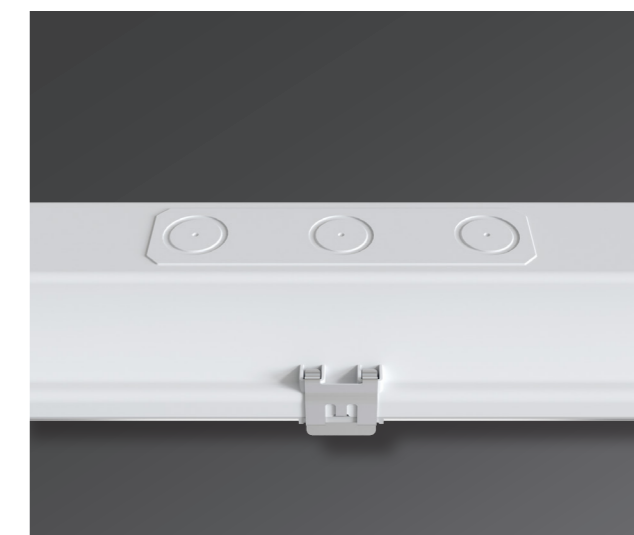


Easy and safe assembly:

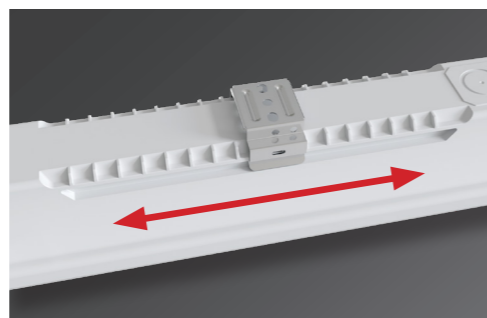
- with stainless steel clips
- with gear tray integrated into the diffuser



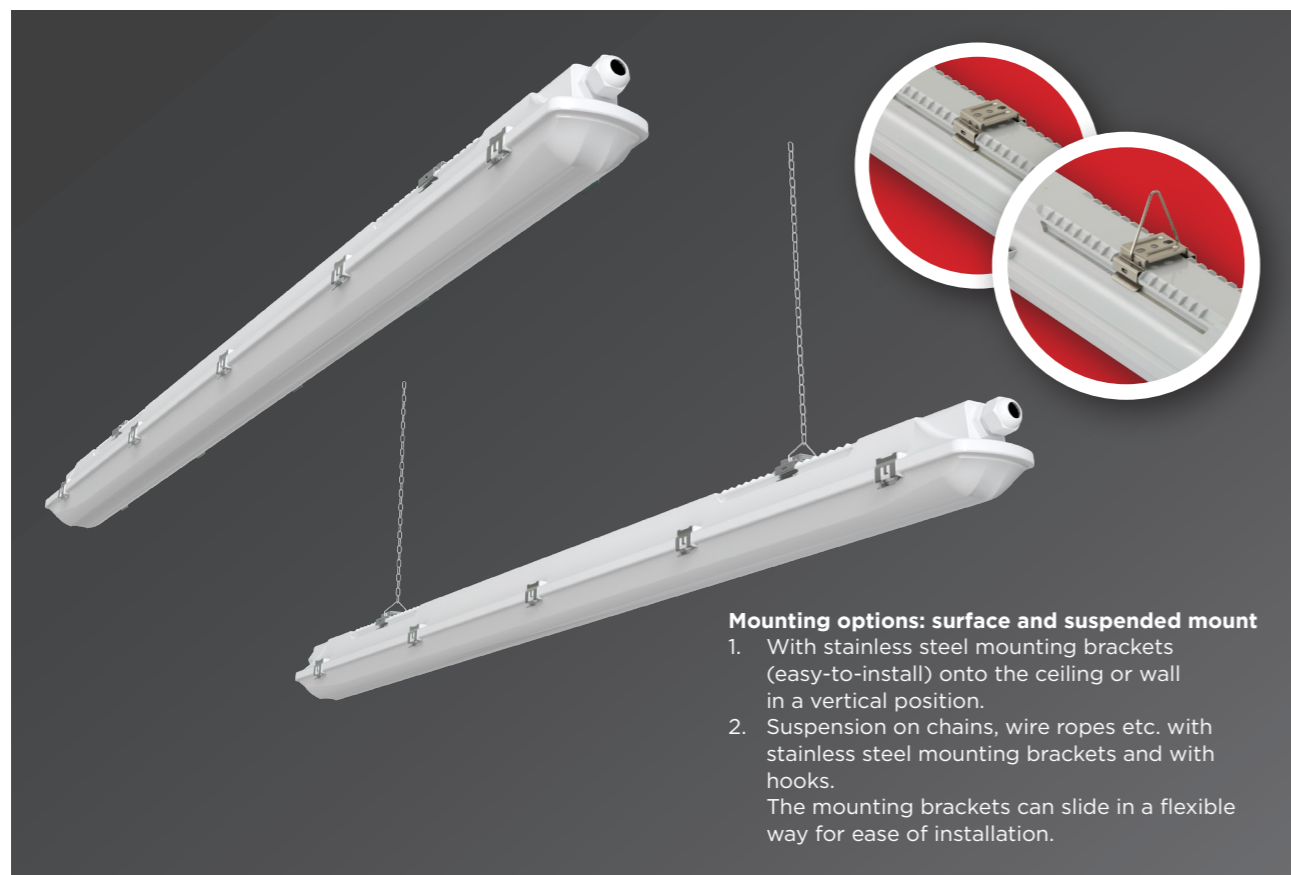
With 3-pole or optional 5-pole terminal block



Various choices of cable entry



Flexible mounting brackets

**Mounting options: surface and suspended mount**

1. With stainless steel mounting brackets (easy-to-install) onto the ceiling or wall in a vertical position.
2. Suspension on chains, wire ropes etc. with stainless steel mounting brackets and with hooks. The mounting brackets can slide in a flexible way for ease of installation.

Options available for order besides DALI:

Microwave motion sensor



Adjustable CCT

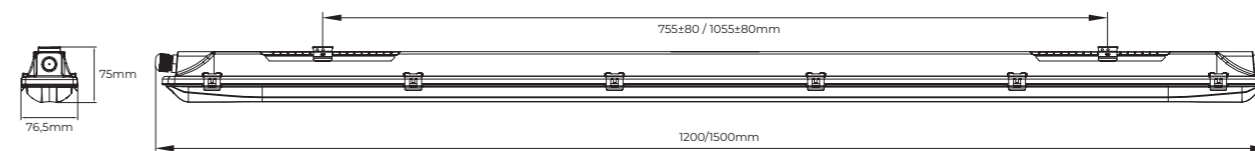


Emergency kit

Technical data (extract)

Products with a 5-year warranty	Power (W)	Luminare total luminous flux - emitted (lm)	Efficacy (lm/W)	CRI	Lifetime L70B50 (hrs)	Size (Length) (mm)	Weight (kg)	EEC
874-35W	16,5/22/28/34W	2300/2850/3500/4100 lm	140/130/125/120 lm/W	80	50.000	1200	1,3	D
874-52W	25/33/42/50W	3500/4300/5250/6000 lm	140/130/125/120 lm/W	80	50.000	1500	1,6	D

Further options available on request:

**Technical drawing with main dimensions****Photometric curves:**

874-EASY

