

775-PC

Industrial dust and waterproof luminaires

Equipped with **LED modules**. 775-PC is available in the following sizes: 2x600mm, 1x1200mm, 1x1500mm, 2x1200mm, 2x1500mm

YOUR MAIN BENEFITS:

A professional luminaire for wide usage, that fulfils the strongest quality requirements. Especially for applications, where **high impact resistance (IK rating)** is required. Available in IP65 (or optionally also IP66 or IP67).

CE

775-PC



IP65



Option:

IP66

IP67



FIELD OF APPLICATION:

Due to the construction principles of the gasket, the closing system and the diffuser our fixtures ensure a high grade of protection (IP65 or IP66) against dust, contamination and water permeation. (Optionally available in IP67). In accordance with their IP-grade they can be used widely to illuminate spaces with dusty and humid environment. Thanks to its **enhanced impact resistance**, 775-PC is especially suitable for applications, where **a high IK impact rating** is required.

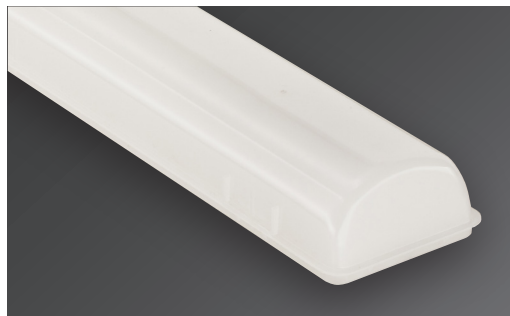
When using outdoors, the fittings should be protected against direct sunlight and adverse weather conditions. Under 0°C the application of a venting cable gland is necessary, as well as the silicone gasket is recommended.

TECHNICAL DESCRIPTION AND BENEFITS:

- **Housing:** It is made of flame retardant **injection moulded polycarbonate (PC)** (suitable for 850°C glow wire test), in light grey (RAL7035) colour. This material has very high mechanical strength and allows us to reach an excellent shock resistance.
- The **diffuser** is available in the following versions:
Injection moulded polycarbonate (**PC**), **opal**, with a shock resistance of IK10, with extremely high light permeability and well-balanced light dispersing.
As option injection moulded acrylic (PMMA) diffuser in opal version is available.
The diffusers are designed with respect to their optical characteristics and are **UV resistant**.
- The **gasket** between the diffuser and the housing is available in two versions:
- **Injected endless silicone foam**
- **Non-aging PU (polyurethane) endless foam**
- **Fixing of the diffuser to the body:** with highly resistant clips made of **stainless steel** (standard or tamper-proof).
- **Gear tray** (reflector): White powder coated steel sheet according to **Zhaga** standards or customised.
- **Electrical components:** The adequate power supply is ensured with the electronic driver, that is built into the luminaire.

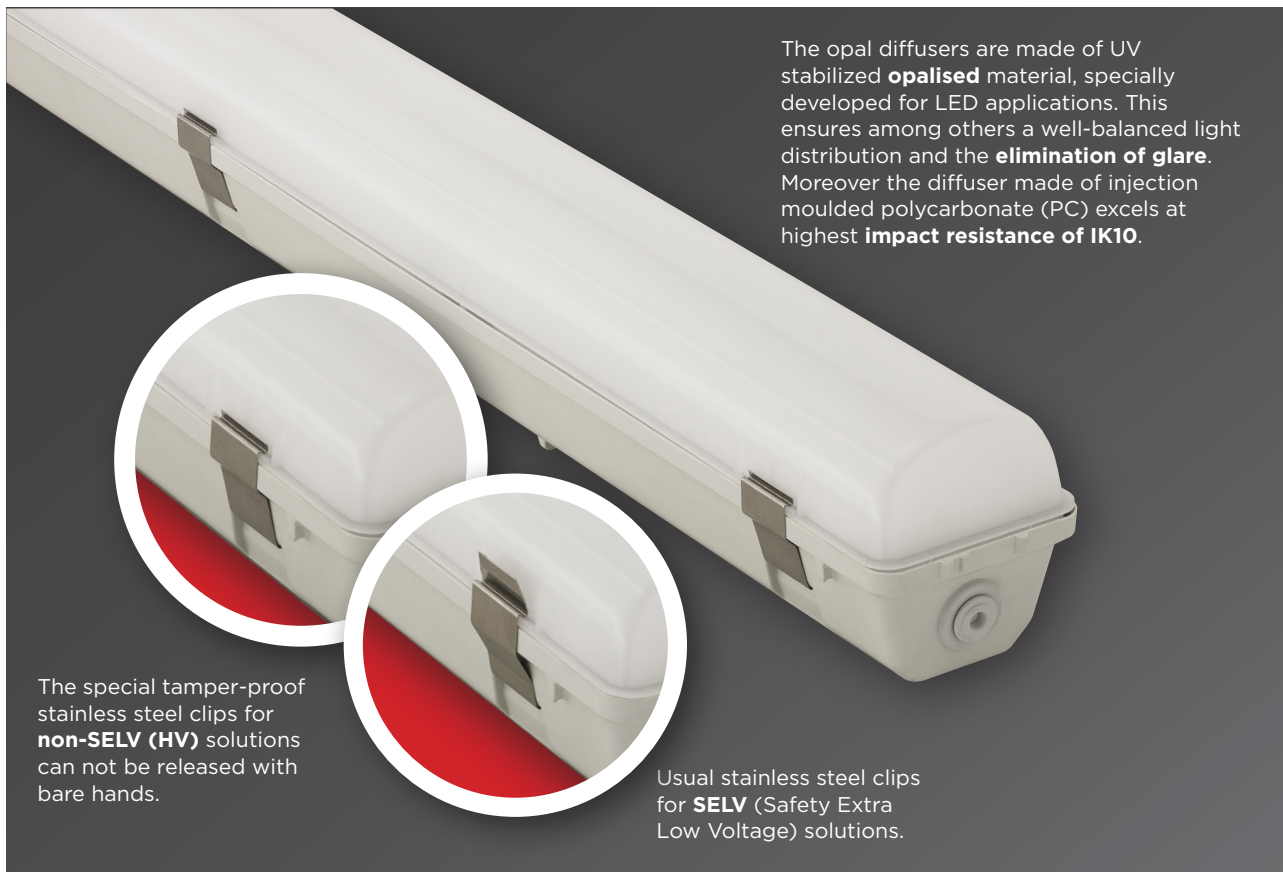
Main technical options

Our new opal diffuser has an **outstanding light transmissivity of more than 90%**. With this great light permeability, it is an **excellent choice for luminaires equipped with LED modules**.



LED

The opal diffusers are made of UV stabilized **opalised** material, specially developed for LED applications. This ensures among others a well-balanced light distribution and the **elimination of glare**. Moreover the diffuser made of injection moulded polycarbonate (PC) excels at highest **impact resistance of IK10**.



The special tamper-proof stainless steel clips for **non-SELV (HV)** solutions can not be released with bare hands.

Usual stainless steel clips for **SELV** (Safety Extra Low Voltage) solutions.

775-PC



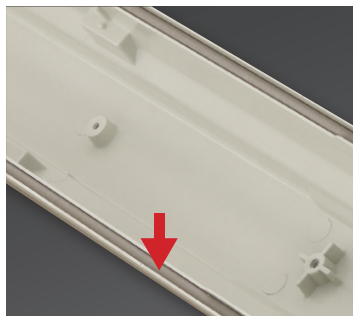
The gear tray is made of white powder coated steel sheet according to **Zhaga** standards. On request customisation possible.



Ways of installing:
1. With stainless steel suspension brackets (easy-to-install) onto the ceiling.

2. Suspension on chains with stainless steel suspension brackets mounted with hooks.

In order to ensure **maximum heat**, chemical and weather **resistance** even under tough conditions, the **gasket** between the diffuser and housing is made of **silicone** foam with enhanced resistance.



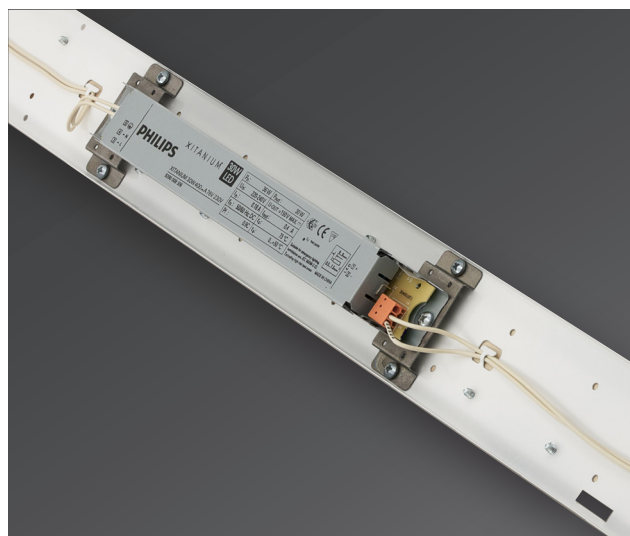
CLO

Light sources suffer from degradation in light output over time. **The CLO feature enables LED solutions to deliver constant lumen output through the life of the light engine.**

Further accessories:

1. cable gland
2. rapid connector
3. circular connector system

Different connectors enabling the electrical connection **without disassembling** the luminaire, thus **avoiding** a potential damage of the LED's inside the luminaire through **electrostatic discharge (ESD)**.



Depending on customer requirements we can reach different levels of luminous flux (lumen) as well as luminous efficacy (lm/Watt) of our LED luminaires. For more details please see technical data.

In order to optimise the thermal management of the luminaire we avoid the direct contact of the gear tray and driver, thus increasing the lifetime of the modules and driver.

Technical data (extract)

Products with a 5-year warranty	Power (W)	Luminaire total luminous flux - emitted (lm) PMMA	Lum. efficacy (lm/W) PMMA	CRI	Lifetime L70B50 (Ta=35°C)	Lifetime L80B10 (Ta=35°C)	A (mm)	B (mm)	Weight (kg)	EEI
---------------------------------	-----------	---	---------------------------	-----	---------------------------	---------------------------	--------	--------	-------------	-----

Lumnium EU with a DIP switch driver (CCT: 4000K, on request other CCTs are available)

775 2ft (600mm)	19/24	2700/3300	142	>80	>72.000 h	>72.000 h	669	460	0,9	D
775 4ft (1200mm)	21/25/29/35	3100/3800/4300/5000	143	>80	>72.000 h	>72.000 h	1277	800	2,2	D
775 5ft (1500mm)	24/31/37/44	3800/4700/5500/6300	143	>80	>72.000 h	>72.000 h	1577	1100	2,5	D
775 4ft (1200mm)	21/27/32/38	3300/4100/4800/5400	143	>80	>72.000 h	>72.000 h	1277	800	2,2	D
775 5ft (1500mm)	28/36/43/51	4500/5500/6300/7300	143	>80	>72.000 h	>72.000 h	1577	1100	2,5	D

Lumnium EU PRO with a DIP switch driver (CCT: 4000K, on request other CCTs are available)

775 4ft (1200mm)	20/25/31/36	3400/4100/5000/5700	158	>80	>102.000 h	>102.000 h	1277	800	2,2	C
775 5ft (1500mm)	21/26/32/37	3500/4400/5200/6000	162	>80	>102.000 h	>102.000 h	1577	1100	2,5	C
775 4ft (1200mm)	18/23/27/32	3100/3800/4500/5300	165	>80	>102.000 h	>102.000 h	1277	800	2,2	C
775 5ft (1500mm)	25/30/36/43	4200/5300/6300/7300	170	>80	>102.000 h	>102.000 h	1577	1100	2,5	C

Lumnium EU HF (CCT: 4000K, on request other CCTs are available)

775 4ft (2x1200mm)*	62	8600	138	>80	>72.000 h	>72.000 h	1277	800	2,65	D
775 5ft (2x1500mm)*	76	10800	140	>80	>72.000 h	>72.000 h	1577	1100	3	D

Philips Fortimo HV6 HF 3klm/ft (CCT: 4000K, on request other CCTs are available)

775 4ft (2x1200mm)*	66	10000	153	>80	>100.000 h	>64.000 h	1277	800	2,65	C
775 5ft (2x1500mm)*	83	12700	153	>80	>100.000 h	>64.000 h	1577	1100	3	C

Products with a 5-year warranty	Power (W)	Luminaire total luminous flux - emitted (lm) PC	Lum. efficacy (lm/W) PC	CRI	Lifetime L70B50 (Ta=35°C)	Lifetime L80B10 (Ta=35°C)	A (mm)	B (mm)	Weight (kg)	EEI
---------------------------------	-----------	---	-------------------------	-----	---------------------------	---------------------------	--------	--------	-------------	-----

Lumnium EU with a DIP switch driver (CCT: 4000K, on request other CCTs are available)

775 2ft (600mm)	19/24	2500/3100	129	>80	>72.000 h	>72.000 h	669	460	0,9	D
775 4ft (1200mm)	21/25/29/35	2900/3600/4100/4800	137	>80	>72.000 h	>72.000 h	1277	800	2,2	D
775 5ft (1500mm)	24/31/37/44	3500/4500/5300/6000	136	>80	>72.000 h	>72.000 h	1577	1100	2,5	D
775 4ft (1200mm)	21/27/32/38	3100/3900/4600/5200	136	>80	>72.000 h	>72.000 h	1277	800	2,2	D
775 5ft (1500mm)	28/36/43/51	4300/5300/6100/7000	137	>80	>72.000 h	>72.000 h	1577	1100	2,5	D

Lumnium EU PRO with a DIP switch driver (CCT: 4000K, on request other CCTs are available)

775 4ft (1200mm)	20/25/31/36	3200/3900/4800/5500	152	>80	>102.000 h	>102.000 h	1277	800	2,2	C
775 5ft (1500mm)	21/26/32/37	3300/4200/5000/5700	154	>80	>102.000 h	>102.000 h	1577	1100	2,5	C
775 4ft (1200mm)	18/23/27/32	2900/3600/4300/5100	159	>80	>102.000 h	>102.000 h	1277	800	2,2	C
775 5ft (1500mm)	25/30/36/43	4000/5100/6100/7000	162	>80	>102.000 h	>102.000 h	1577	1100	2,5	C

Lumnium EU HF (CCT: 4000K, on request other CCTs are available)

775 4ft (2x1200mm)*	62	8100	130	>80	>72.000 h	>72.000 h	1277	800	2,65	D
775 5ft (2x1500mm)*	76	10200	134	>80	>72.000 h	>72.000 h	1577	1100	3	D

Philips Fortimo HV6 HF 3klm/ft (CCT: 4000K, on request other CCTs are available)

775 4ft (2x1200mm)*	66	9400	144	>80	>100.000 h	>64.000 h	1277	800	2,65	C
775 5ft (2x1500mm)*	83	12000	145	>80	>100.000 h	>64.000 h	1577	1100	3	C

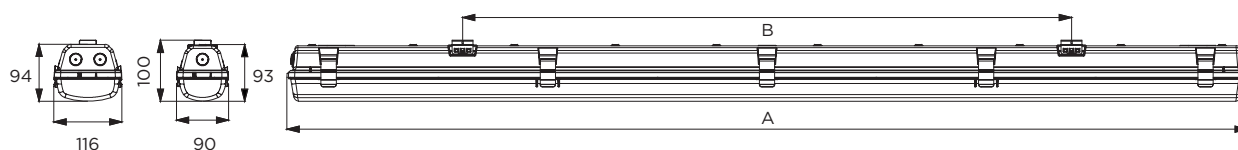
* The LED strips are placed in one line in a twin (wider) housing.

Further options:

On request:



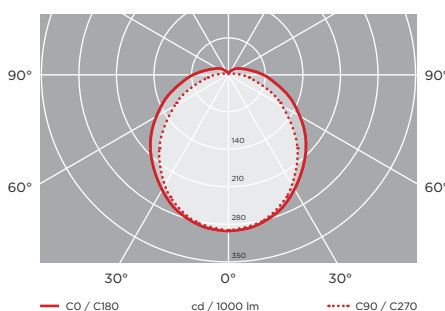
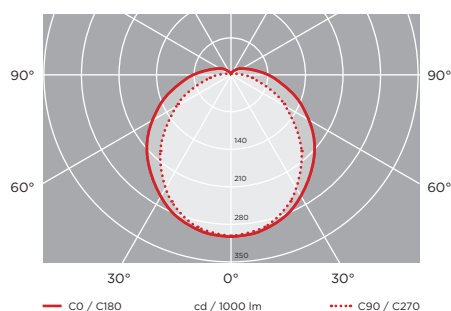
Schematic drawing with main dimensions



Photometric curves:

775-PC, 4ft (2x1200mm)*, Philips Fortimo LED Strip HV6, 66W, 10000lm, PMMA

775-PC, 4ft (2x1500mm)*, Philips Fortimo LED Strip HV6, 83W, 12000lm, PC



Luminaire customisation and the options of advanced controls are presented on page 5