

# 771-VENTILA

## Industrial dust and waterproof luminaires with LED modules

771-Ventila is available in the following sizes: 1x600mm, 1x1200mm, 1x1500mm, 2x600mm, 2x1200mm, 2x1500mm

### YOUR MAIN BENEFITS:

A professional solution especially **for outdoor applications**. 771-Ventila withstands the impact of adverse weather conditions (sunlight, rain, wind etc.). Ta = -20 to +35°C  
Full range available in IP65 or IP66.



### FIELD OF APPLICATION:

Thanks to the construction principles of the gasket, the closing system and the diffuser our fixtures ensure a high grade of protection (IP65, IP66) against dust, contamination and water permeation. In accordance with their IP grade they can be used widely to illuminate areas with dusty and humid environment.

Due to its **enhanced weather resistance**, 771-Ventila is especially suitable for applications, where **error-free functioning in outdoor conditions** is desired.

### TECHNICAL DESCRIPTION AND BENEFITS:

- **Housing:** It is made of flame retardant glass fibre reinforced polyester (on request suitable for 850°C glow wire test, too), in light grey (RAL 7035) colour. The glass fibre reinforced polyester has a very good temperature resistance and mechanical stability. Furthermore, it is a good electrical insulator resisting the impacts of several chemicals and weather conditions. Its stability of size and shape at changing temperatures is excellent.
- The **diffuser** is available in injection moulded **opal acrylic (PMMA)** with extremely high light permeability, well-balanced light dispersing and **weather resistance**. The diffusers are designed with respect to their optical characteristics and are **UV resistant**.
- In order to ensure **maximum heat**, chemical and weather **resistance** even under tough conditions, the **gasket** between the diffuser and housing is made of **silicone foam** with enhanced durability.
- **Fixing of the diffuser to the body:** with highly resistant stainless steel clips (standard or tamper-proof version).
- **Gear tray (reflector):** White powder coated steel sheet according to **Zhaga** standards or customised.
- **Electrical components:** The adequate power supply is ensured with the electronic driver that is built into the luminaire.

LED

CE

771-VENTILA

IP65



Option:

IP66



3F





## Main technical options

Our opal diffuser has an **outstanding light transmissivity of more than 93%**. With this great light permeability, it is an **excellent choice for luminaires equipped with LED modules**.



771-VENTILA



The opal diffusers are made of UV stabilized **opalised** material, specially developed for LED applications. This ensures among others a well-balanced light distribution and the **elimination of glare**.

Fixing of the diffuser to the body: With highly resistant stainless steel clips. Tamper-proof clips are available on request.



The gear tray is made of white powder coated steel sheet according to **Zhaga** standards. On request customisation possible.

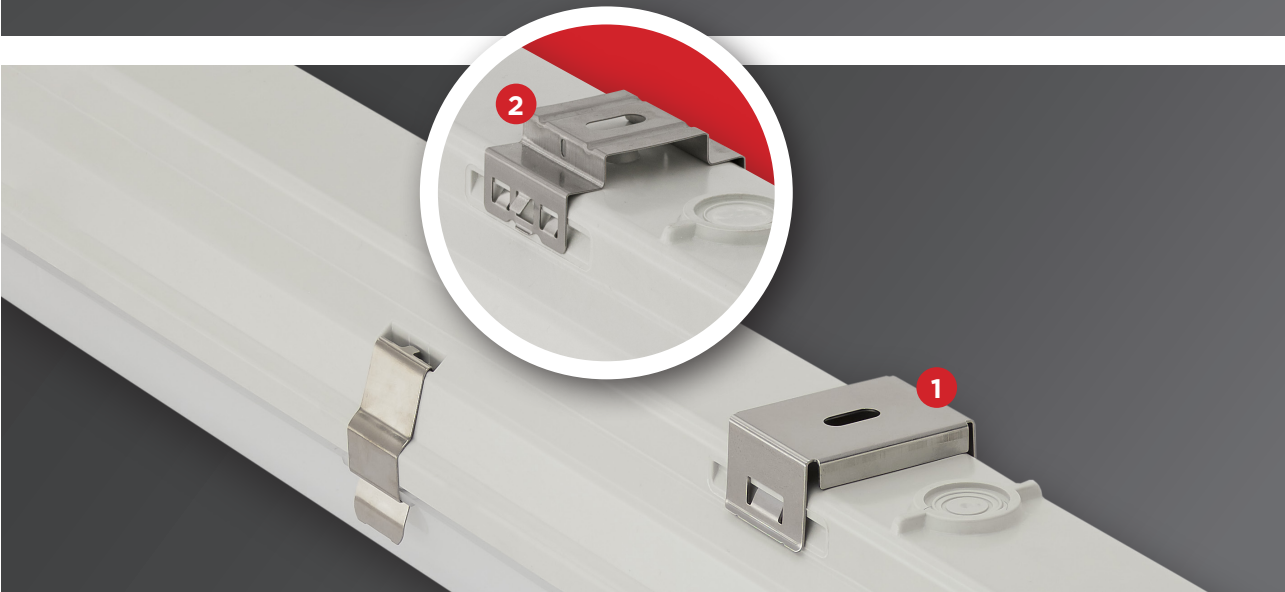


Depending on customer requirements we can reach different levels of luminous flux (lumen) and high luminous efficacy (lm/Watt) of our LED luminaires. For more details please see technical data.

In order to ensure **maximum** heat, chemical and **weather resistance** even under tough conditions, the **gasket** between the diffuser and housing is made of **silicone** foam with enhanced durability.



Comes with a **venting cable gland** in order to prevent the build-up of moisture inside the luminaire thus avoiding its damage.



#### Ways of installing:

1. In order to withstand the outdoor weather conditions (wind, storm), we recommend to use **strengthened** stainless steel suspension brackets. They are easy to install onto the **wall and ceiling**.
2. **Usual** suspension brackets, suitable for installation onto the **ceiling**, are available on request.



## Technical data (extract)

Products with a 2-year warranty	Power (W)	Luminaire total luminous flux - emitted (lm) PMMA	Lum. efficacy (lm/W) PMMA	CRI	Lifetime L70B50 (Ta=35°C)	Lifetime L80B10 (Ta=35°C)	A (mm)	B (mm)	Weight (kg)	EEL
<b>Lumnum EU with a DIP switch driver (CCT: 4000K, on request other CCTs are available)</b>										
771 2ft (600mm)	19/24	2700/3300	142	>80	>72.000 h	>72.000 h	669	460	0,9	D
771 4ft (1200mm)	21/25/29/35	3100/3800/4300/5000	143	>80	>72.000 h	>72.000 h	1277	800	2,2	D
771 5ft (1500mm)	24/31/37/44	3800/4700/5500/6300	143	>80	>72.000 h	>72.000 h	1577	1100	2,5	D
771 4ft (1200mm)	21/27/32/38	3300/4100/4800/5400	143	>80	>72.000 h	>72.000 h	1277	800	2,2	D
771 5ft (1500mm)	28/36/43/51	4500/5500/6300/7300	143	>80	>72.000 h	>72.000 h	1577	1100	2,5	D
<b>Lumnum EU PRO with a DIP switch driver (CCT: 4000K, on request other CCTs are available)</b>										
771 4ft (1200mm)	20/25/31/36	3400/4100/5000/5700	158	>80	>102.000 h	>102.000 h	1277	800	2,2	C
771 5ft (1500mm)	21/26/32/37	3500/4400/5200/6000	162	>80	>102.000 h	>102.000 h	1577	1100	2,5	C
771 4ft (1200mm)	18/23/27/32	3100/3800/4500/5300	165	>80	>102.000 h	>102.000 h	1277	800	2,2	C
771 5ft (1500mm)	25/30/36/43	4200/5300/6300/7300	170	>80	>102.000 h	>102.000 h	1577	1100	2,5	C
<b>Lumnum EU HF (CCT: 4000K, on request other CCTs are available)</b>										
771 4ft (2x1200mm)*	62	8600	138	>80	>72.000 h	>72.000 h	1277	800	2,65	D
771 5ft (2x1500mm)*	76	10800	140	>80	>72.000 h	>72.000 h	1577	1100	3	D
<b>Philips Fortimo HV6 (CCT: 4000K, on request other CCTs are available)</b>										
771 4ft (2x1200mm)*	58	8900	153	>80	>100.000 h	>64.000 h	1277	800	2,65	C
771 5ft (2x1500mm)*	73	11300	154	>80	>100.000 h	>64.000 h	1577	1100	3	C
<b>Philips Fortimo HV6 HF 3klm/ft (CCT: 4000K, on request other CCTs are available)</b>										
771 4ft (2x1200mm)*	66	10000	153	>80	>100.000 h	>64.000 h	1277	800	2,65	C
771 5ft (2x1500mm)*	83	12700	153	>80	>100.000 h	>64.000 h	1577	1100	3	C

\* The LED strips are placed in one line in a twin (wider) housing.

771-VENTILA

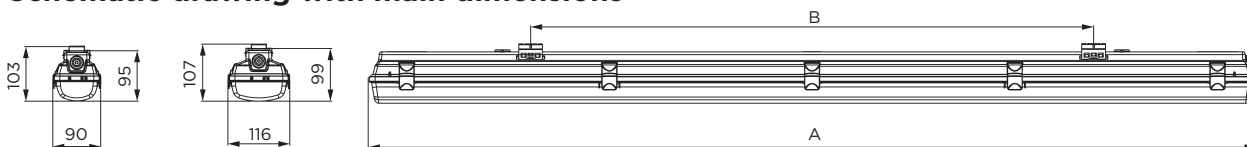
Further options:



On request:

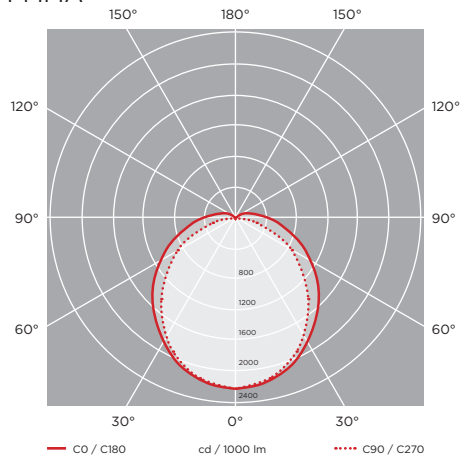


## Schematic drawing with main dimensions

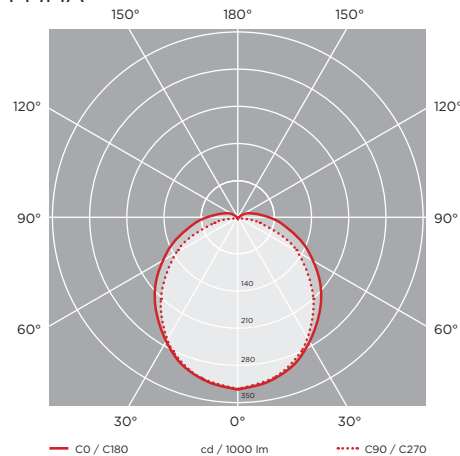


## Photometric curves:

771-Ventila, 4ft (2x1200mm)\*, Philips Fortimo LED Strip HV6, 56W, 8300lm, PMMA



771-Ventila, 5ft (2x1500mm)\*, Philips Fortimo LED Strip HV6, 70W, 10500lm, PMMA



Luminaire customisation and the options of advanced controls are presented on page 5