

771-FAVOURITE

Industrial dust and waterproof luminaires with LED modules

Now with a new, opalised diffuser with unique light transmissivity!
Specially developed for LED applications



FIELD OF APPLICATION:

Thanks to the construction principles of the gasket, the closing system and the diffuser our LED fixtures ensure a high grade of protection (IP65, IP66 or IP67) against dust, contamination and water permeation. In accordance with their IP grade they can be widely used to illuminate spaces with dusty and humid environment.

When using outdoors, the fittings should be protected against direct sunlight and adverse weather conditions. Under 0°C the application of a venting cable gland is necessary, as well as the silicone gasket is recommended.

TECHNICAL DESCRIPTION AND BENEFITS:

- **Housing:** It is made of flame retardant glass fibre reinforced polyester (on request suitable for 850°C glow wire test too), in light grey (RAL7035) colour. Glass fibre reinforced polyester has very good temperature resistance, mechanical stability. Furthermore, it is a good electrical insulator resisting the impacts of several chemicals and weather conditions. Its stability of size and shape at changing temperatures is excellent.
- **Diffuser:** Our LED luminaires with **opal** diffuser offer you:
 - **extremely high light efficiency** through high **light permeability, unique on the market**, (up to 93% light transmissivity)
 - an **excellent light uniformity** through **well-balanced light dispersing** (no shadows)
 - **elimination of the dazzling effect** (no glare)
 - **aesthetical appearance (no dots** of the single LEDs)
 - **keeping the usual, well-known features of the diffuser** such as chemical and heat resistance, mechanical features, **UV stabilization** etc.

Available in PC - injection moulded **Polycarbonate** (high mechanical strength and high heat and shock resistance) **or in Acrylic** - injection moulded **PMMA** (unique non-aging properties, high chemical resistance).

- The **gasket** between the diffuser and the housing is available in two versions:
 - **Injected endless silicone foam**
 - **Non-aging PU** (polyurethane) **endless foam**
- **Fixing the diffuser to the body:** with highly resistant clips made of **stainless steel** (standard or tamper-proof).
- **Gear tray** (reflector): White powder coated steel sheet according to **Zhaga** standards or customised.
- **Electrical components:** The adequate power supply is ensured through electronic driver, that is built into the luminaire.

LED

CE



771-FAVOURITE

IP65



Option:

IP66

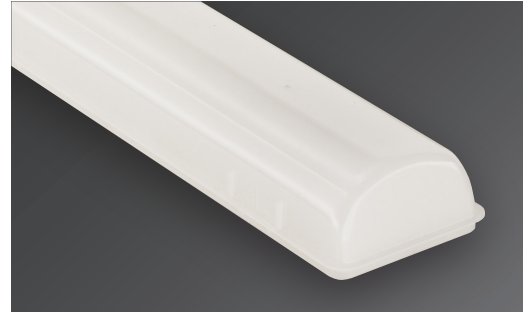
IP67





Main technical options

Our opal diffuser has an **outstanding light transmissivity** up to **93%**. With this great light permeability, it is an **excellent choice for luminaires equipped with LED modules**.



771-FAVOURITE



The opal diffusers are made of UV stabilized **opalised** material, specially developed for LED applications. This ensures among others a well-balanced light distribution and the **elimination of glare**.

Usual stainless steel clips for **SELV** (Safety Extra Low Voltage) solutions.

The special tamper-proof stainless steel clips for **non-SELV (HV)** solutions can not be released with bare hands.



With 771-Favourite - depending on customer requirements - we can reach different levels of luminous flux (lumen) as well as luminous efficacy (lm/Watt). For more details please see technical data.



In order to optimise the thermal management of the luminaire we avoid the direct contact of the gear tray and driver, thus increasing the lifetime of the modules and driver.



LED Version with motion sensor



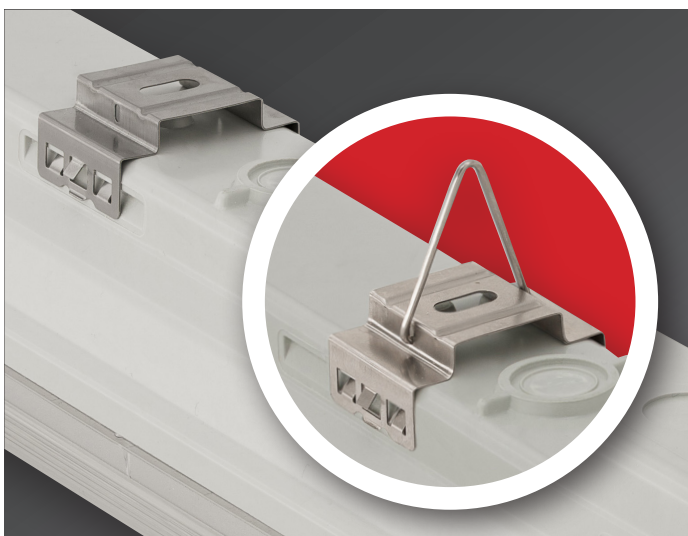
The gear tray is made of white powder coated steel sheet according to **Zhaga** standards. On request customisation possible.



Option: The **Rapid Connector** enables the electrical connection **without disassembling** the luminaire, thus **avoiding** a potential damage of the LED's inside the luminaire through **electrostatic discharge (ESD)**.

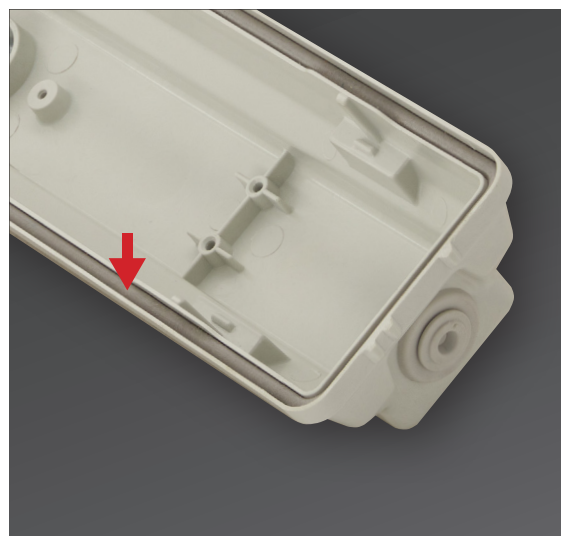


Light sources suffer from degradation in light output over time. **The CLO feature enables LED solutions to deliver constant lumen output through the life of the light engine.**



Ways of installing:

1. With stainless steel suspension brackets (easy-to-install) onto the ceiling.
2. Suspension on chains with stainless steel suspension brackets mounted with hooks.



In order to ensure **maximum heat**, chemical and weather **resistance** even under tough conditions, the **gasket** between the diffuser and housing is made of **silicone** foam with enhanced resistance.



Technical data (extract)

Products with a 5-year warranty	Power (W)	Luminare total luminous flux - emitted (lm) PMMA	Lum. efficacy (lm/W) PMMA	CRI	Lifetime L70B50 (Ta=35°C)	Lifetime L80B10 (Ta=35°C)	A (mm)	B (mm)	Weight (kg)	EEI
---------------------------------	-----------	--	---------------------------	-----	---------------------------	---------------------------	--------	--------	-------------	-----

Lumnium EU with a DIP switch driver (CCT: 4000K, on request other CCTs are available)

771 2ft (600mm)	19/24	2700/3300	142	>80	>72.000 h	>72.000 h	669	460	0,9	D
771 4ft (1200mm)	21/25/29/35	3100/3800/4300/5000	143	>80	>72.000 h	>72.000 h	1277	800	2,2	D
771 5ft (1500mm)	24/31/37/44	3800/4700/5500/6300	143	>80	>72.000 h	>72.000 h	1577	1100	2,5	D
771 4ft (1200mm)	21/27/32/38	3300/4100/4800/5400	143	>80	>72.000 h	>72.000 h	1277	800	2,2	D
771 5ft (1500mm)	28/36/43/51	4500/5500/6300/7300	143	>80	>72.000 h	>72.000 h	1577	1100	2,5	D

Lumnium EU PRO with a DIP switch driver (CCT: 4000K, on request other CCTs are available)

771 4ft (1200mm)	20/25/31/36	3400/4100/5000/5700	158	>80	>102.000 h	>102.000 h	1277	800	2,2	C
771 5ft (1500mm)	21/26/32/37	3500/4400/5200/6000	162	>80	>102.000 h	>102.000 h	1577	1100	2,5	C
771 4ft (1200mm)	18/23/27/32	3100/3800/4500/5300	165	>80	>102.000 h	>102.000 h	1277	800	2,2	C
771 5ft (1500mm)	25/30/36/43	4200/5300/6300/7300	170	>80	>102.000 h	>102.000 h	1577	1100	2,5	C

Lumnium EU HF (CCT: 4000K, on request other CCTs are available)

771 4ft (2x1200mm)*	62	8600	138	>80	>72.000 h	>72.000 h	1277	800	2,65	D
771 5ft (2x1500mm)*	76	10800	140	>80	>72.000 h	>72.000 h	1577	1100	3	D

Philips Fortimo HV6 HF 3klm/ft (CCT: 4000K, on request other CCTs are available)

771 4ft (2x1200mm)*	66	10000	153	>80	>100.000 h	>64.000 h	1277	800	2,65	C
771 5ft (2x1500mm)*	83	12700	153	>80	>100.000 h	>64.000 h	1577	1100	3	C

Products with a 5-year warranty	Power (W)	Luminare total luminous flux - emitted (lm) PC	Lum. efficacy (lm/W) PC	CRI	Lifetime L70B50 (Ta=35°C)	Lifetime L80B10 (Ta=35°C)	A (mm)	B (mm)	Weight (kg)	EEI
---------------------------------	-----------	--	-------------------------	-----	---------------------------	---------------------------	--------	--------	-------------	-----

Lumnium EU with a DIP switch driver (CCT: 4000K, on request other CCTs are available)

771 2ft (600mm)	19/24	2500/3100	129	>80	>72.000 h	>72.000 h	669	460	0,9	D
771 4ft (1200mm)	21/25/29/35	2900/3600/4100/4800	137	>80	>72.000 h	>72.000 h	1277	800	2,2	D
771 5ft (1500mm)	24/31/37/44	3500/4500/5300/6000	136	>80	>72.000 h	>72.000 h	1577	1100	2,5	D
771 4ft (1200mm)	21/27/32/38	3100/3900/4600/5200	136	>80	>72.000 h	>72.000 h	1277	800	2,2	D
771 5ft (1500mm)	28/36/43/51	4300/5300/6100/7000	137	>80	>72.000 h	>72.000 h	1577	1100	2,5	D

Lumnium EU PRO with a DIP switch driver (CCT: 4000K, on request other CCTs are available)

771 4ft (1200mm)	20/25/31/36	3200/3900/4800/5500	152	>80	>102.000 h	>102.000 h	1277	800	2,2	C
771 5ft (1500mm)	21/26/32/37	3300/4200/5000/5700	154	>80	>102.000 h	>102.000 h	1577	1100	2,5	C
771 4ft (1200mm)	18/23/27/32	2900/3600/4300/5100	159	>80	>102.000 h	>102.000 h	1277	800	2,2	C
771 5ft (1500mm)	25/30/36/43	4000/5100/6100/7000	162	>80	>102.000 h	>102.000 h	1577	1100	2,5	C

Lumnium EU HF (CCT: 4000K, on request other CCTs are available)

771 4ft (2x1200mm)*	62	8100	130	>80	>72.000 h	>72.000 h	1277	800	2,65	D
771 5ft (2x1500mm)*	76	10200	134	>80	>72.000 h	>72.000 h	1577	1100	3	D

Philips Fortimo HV6 HF 3klm/ft (CCT: 4000K, on request other CCTs are available)

771 4ft (2x1200mm)*	66	9400	144	>80	>100.000 h	>64.000 h	1277	800	2,65	C
771 5ft (2x1500mm)*	83	12000	145	>80	>100.000 h	>64.000 h	1577	1100	3	C

* The LED strips are placed in one line in a twin (wider) housing.

771-FAVOURITE

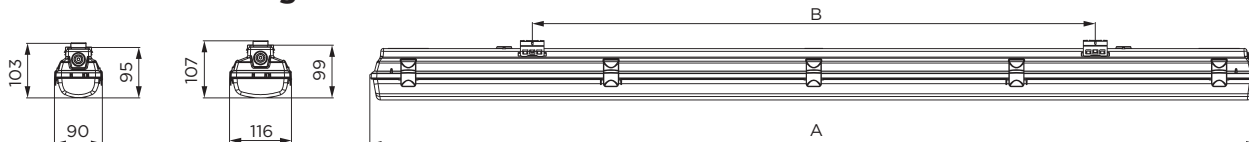
Further options:



On request:

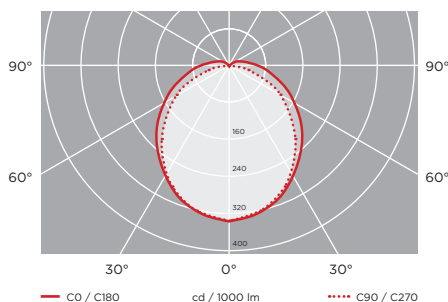


Schematic drawing with main dimensions



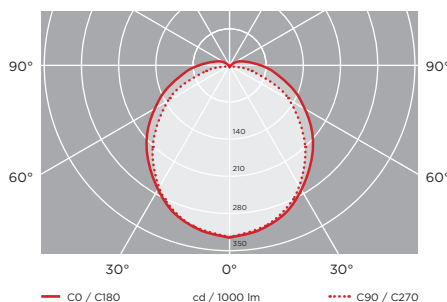
Photometric curves:

771-Favourite, 4ft (2x1200mm)*, Philips Fortimo LED strip HV6, 66W, 9400lm, PC



Photometric curves:

771-Favourite, 5ft (2x1500mm)*, Philips Fortimo LED Strip HV6, 83W, 12700lm, PMMA



Luminaire customisation and the options of advanced controls are presented on page 5