

771-FARMER

Industrial dust and waterproof luminaires with LED modules

Specially developed for farming industry and chemically aggressive environment!

YOUR MAIN BENEFITS:

Solution in high IP protection for **extremely harsh environment**. Heavily armed with special components for long-term **fight against chemicals**. Perfectly applicable in **agricultural industry**.



FIELD OF APPLICATION:

Thanks to the construction principles of the gasket, the closing system and the diffuser our LED fixtures ensure a high grade of protection (IP 65, IP 66) against dust, contamination and water permeation. In accordance with their IP grade and high chemical resistance they are especially recommended for buildings where animals are kept and also for harsh environmental rooms.

When using outdoors, the fittings should be protected against direct sunlight and adverse weather conditions. Under 0°C the application of a venting cable gland is necessary.

TECHNICAL DESCRIPTION AND BENEFITS:

- **Housing:** It is made of flame retardant glass-fibre reinforced polyester, in light grey (RAL7035) colour. The glass fibre reinforced polyester has a very good temperature resistance and mechanical stability. Furthermore, it is a good electrical insulator resisting the impacts of several chemicals and weather conditions. Its stability of size and shape at changing temperatures is excellent.
- **Diffuser:** The diffuser is available in **injection moulded opal acrylic (PMMA)** with unique **non-aging** properties and **extremely high chemical resistance**.
- Our LED-luminaires with **opal** diffuser offer you:
 - **extremely high light transmissivity** (up to 93%) **unique on the market**
 - **homogenous, well-balanced light** (no shadows)
- **Gasket:** **Injected endless silicone foam** with enhanced resistance
- **Fixing the diffuser to the body:** with highly resistant **tamper-proof clips made of stainless steel**
- **Gear tray** (reflector): white powder coated steel sheet according to **Zhaga** standards or customised
- **Electrical components:** The adequate power supply is ensured through a special **hermetically sealed electronic driver - LUMNIUM Farmer HV**.

LED



CE

771-FARMER

IP65



Option:

IP66



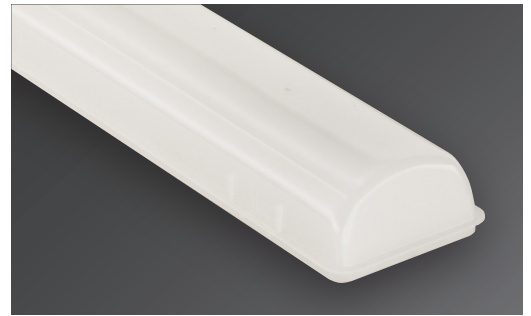
1F

3F



Main technical options

Our new opal diffuser has an **outstanding light transmissivity up to 93%**. Thanks to the wide beam angle, **homogenous illumination** even at low height of luminaire.



771-FARMER

The **maximum of chemical resistance** achieved by using **special components**:

Tinned wires

Hermetically sealed driver

Corrosion resistant LED system, LUMNIUM Farmer HV, designed for long-term resistance against chemicals, especially ammonia.

Strengthened suspension brackets made of stainless steel

1

2



Ways of installing (options):

1. With stainless steel suspension brackets (easy-to-install) onto the ceiling.
2. Suspension on chains with stainless steel suspension brackets mounted with hooks.

Endless silicone foam as sealing with enhanced resistance and extreme durability

Technical data (extract)

Products with a 3-year warranty	Power (W)	Luminaire total luminous flux emitted (lm) PMMA	Lum. efficacy (lm/W) PMMA	CRI	Lifetime L70B50 (Ta=35°C)	Lifetime L80B10 (Ta=35°C)	A (mm)	B (mm)	Weight (kg)	EEI
---------------------------------	-----------	---	---------------------------	-----	---------------------------	---------------------------	--------	--------	-------------	-----

Lumnium3 Farmer HV (CCT: 4000K, on request other CCTs are available)

771 2ft (600 mm)	27	3800	140	>80	>72.000 h	>50.000 h	669	460	1,2	D
771 4ft (1200mm)	23	3800	164	>80	>72.000 h	>50.000 h	1277	800	2	D
771 5ft (1500mm)	33	5000	152	>80	>72.000 h	>50.000 h	1577	1100	2,2	D
771 5ft (2x1500mm)*	43	6600	154	>80	>72.000 h	>40.000 h	1577	1100	2,2	D

Products with a 5-year warranty	Power (W)	Luminaire total luminous flux emitted (lm) PMMA	Lum. efficacy (lm/W) PMMA	CRI	Lifetime L70B50 (Ta=35°C)	Lifetime L80B10 (Ta=35°C)	A (mm)	B (mm)	Weight (kg)	EEI
---------------------------------	-----------	---	---------------------------	-----	---------------------------	---------------------------	--------	--------	-------------	-----

Lumnium5 Farmer HV (CCT: 4000K, on request other CCTs are available)

771 2ft (600mm)	27	3800	140	>80	>72.000 h	>50.000 h	669	460	1,2	D
771 4ft (1200mm)	23	3800	164	>80	>72.000 h	>50.000 h	1277	800	2	D
771 5ft (1500mm)	33	5000	152	>80	>72.000 h	>50.000 h	1577	1100	2,2	D
771 5ft (2x1500mm)*	43	6600	154	>80	>72.000 h	>40.000 h	1577	1100	2,2	D

* The LED strips are placed in one line in a twin (wider) housing.

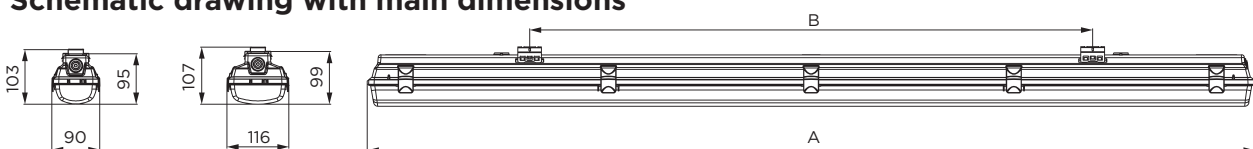
Further options:



On request:

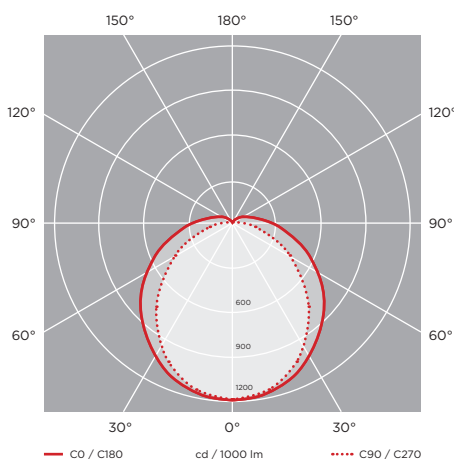


Schematic drawing with main dimensions

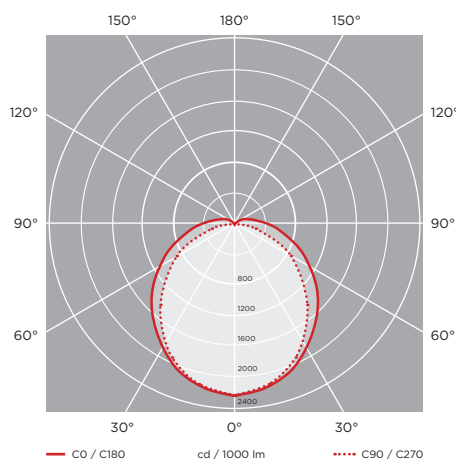


Photometric curves:

771-Farmer, 4ft (1x1200m),
Lumnium Farmer HV, 23W, 3800lm,
PMMA



771-Farmer, 5ft (2x1500mm)*,
Lumnium Farmer HV, 43W, 6600lm,
PMMA



Luminaire customisation and the options of advanced controls are presented on page 5