

# 771-FARMER

Industrial dust and waterproof luminaires with LED modules

**Specially developed for farming industry and chemically aggressive environment!**

## YOUR MAIN BENEFITS:

Solution in high IP protection for **extremely harsh environment**. Heavily armed with special components for long-term **fight against chemicals**. Perfectly applicable in **agricultural industry**.



## FIELD OF APPLICATION:

Thanks to the construction principles of the gasket, the closing system and the diffuser our LED fixtures ensure a high grade of protection (IP 65, IP 66) against dust, contamination and water permeation. In accordance with their IP grade and high chemical resistance they are especially recommended for buildings where animals are kept and also for harsh environmental rooms.

When using outdoors, the fittings should be protected against direct sunlight and adverse weather conditions. Under 0°C the application of a venting cable gland is necessary.

## TECHNICAL DESCRIPTION AND BENEFITS:

- **Housing:** It is made of flame retardant glass-fibre reinforced polyester, in light grey (RAL7035) colour. The glass fibre reinforced polyester has a very good temperature resistance and mechanical stability. Furthermore, it is a good electrical insulator resisting the impacts of several chemicals and weather conditions. Its stability of size and shape at changing temperatures is excellent.
- **Diffuser:** The diffuser is available in **injection moulded opal acrylic (PMMA)** with unique **non-aging** properties and **extremely high chemical resistance**.
- Our LED-luminaires with **opal** diffuser offer you:
  - **extremely high light transmissivity** (up to 93%) **unique on the market**
  - **homogenous, well-balanced light** (no shadows)
- **Gasket:** **silicone-based endless foam** with enhanced resistance
- **Fixing the diffuser to the body:** with highly resistant **tamper-proof clips made of stainless steel**
- **Gear tray (reflector):** white powder coated steel sheet according to **Zhaga** standards or customised
- **Electrical components:** The adequate power supply is ensured through a special **hermetically sealed electronic driver - LUMNIUM Farmer HV**.

LED



CE

771-FARMER

IP65



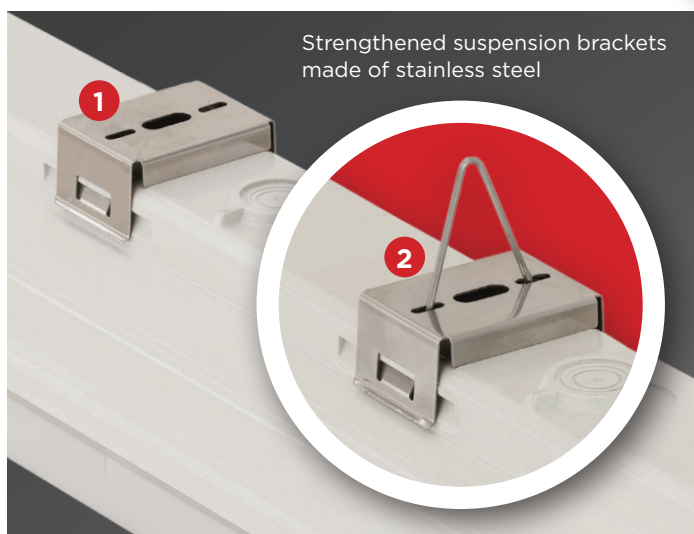
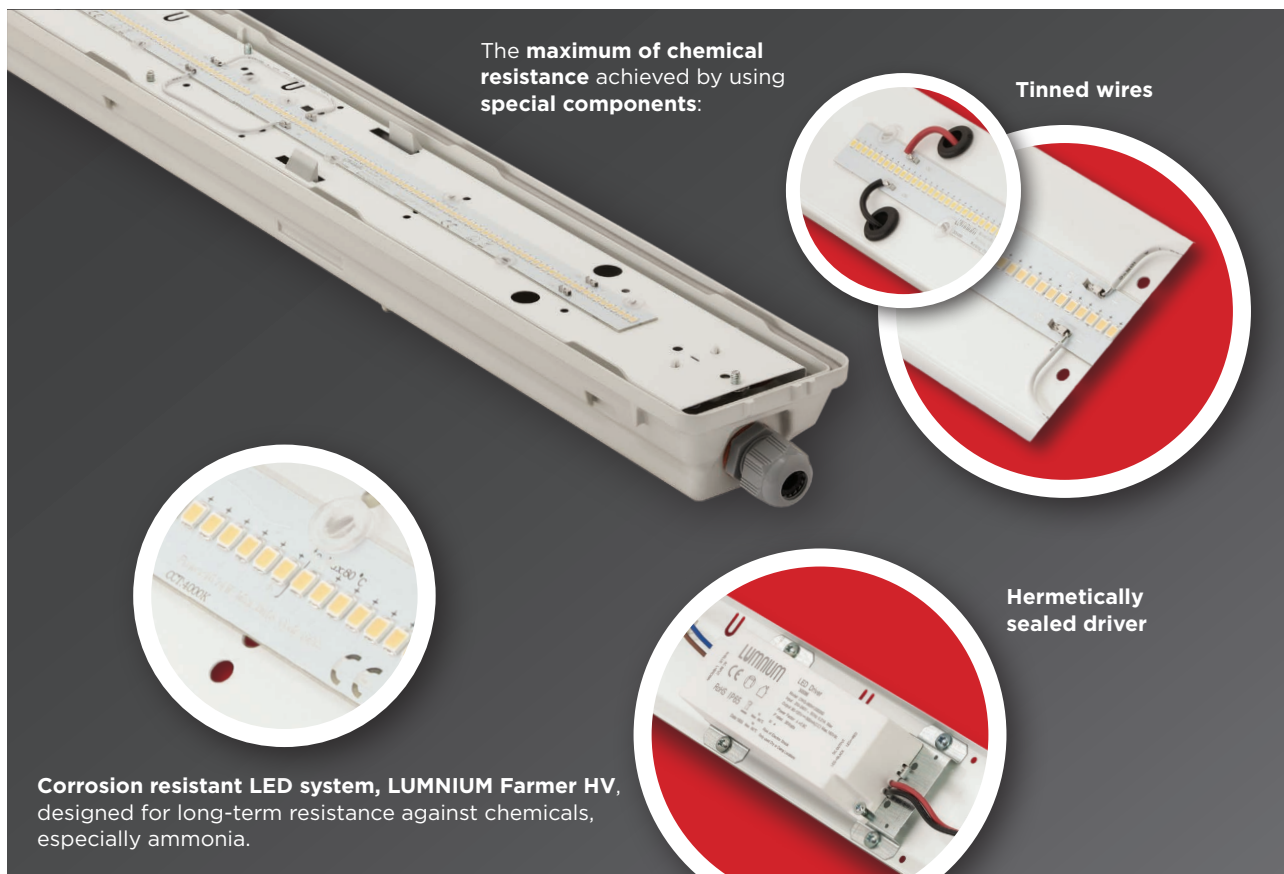
Option:

IP66



## Main technical options

The opal diffuser has an **outstanding light transmissivity up to 93%**. Thanks to the wide beam angle, **homogenous illumination** even at low height of the luminaire.



### Ways of installing (options):

1. With stainless steel suspension brackets (easy-to-install) onto the ceiling.
2. Suspension on chains with stainless steel suspension brackets mounted with hooks.

**Endless silicone foam as sealing** with enhanced resistance and extreme durability

## Technical data (extract)

The \*EPREL database is available at <https://eprel.ec.europa.eu/screen/product/lightsources/xxxxxxx>  
(where the xxxxxx has to be substituted by the reference number given in the last column)

Products with a 3-year or with an extended 5-year warranty	Power (W)	Lum. total luminous flux emitted (lm)		Lum. efficacy (lm/W)		CCT (Kelvin)	CRI	Lifetime L70B50 (Ta=35°C)	Lifetime L80B10 (Ta=35°C)	A (mm)	B (mm)	Weight (kg)	EEI	Light source* (reference)
		PMMA	PC	PMMA	PC									
Lumnium3 Farmer HV														
771 2 ft (600 mm)	27	3800	n.a.	140	n.a.	4000	>80	50 000 h	50 000 h	669	360	1,2	D	696329
771 4ft (1200mm)	23	3800	n.a.	164	n.a.	4000	>80	50 000 h	50 000 h	1277	700	2	D	696329
771 5ft (1500mm)	33	5000	n.a.	152	n.a.	4000	>80	50 000 h	50 000 h	1577	1000	2,2	D	696329
771 5ft (2x1500mm)**	43	6600	n.a.	154	n.a.	4000	>80	50 000 h	40 000 h	1577	1000	2,2	D	696329
Lumnium5 Farmer HV														
771 2 ft (600 mm)	27	3800	n.a.	140	n.a.	4000	>80	50 000 h	50 000 h	669	360	1,2	D	696329
771 4ft (1200mm)	23	3800	n.a.	164	n.a.	4000	>80	50 000 h	50 000 h	1277	700	2	D	696329
771 5ft (1500mm)	33	5000	n.a.	152	n.a.	4000	>80	50 000 h	50 000 h	1577	1000	2,2	D	696329
771 5ft (2x1500mm)**	43	6600	n.a.	154	n.a.	4000	>80	50 000 h	40 000 h	1577	1000	2,2	D	696329

\*\* The LED strips are placed in one line in a twin (wider) housing.

Other colour temperatures available on request

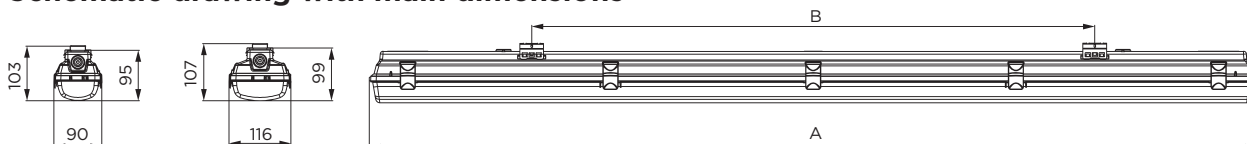
Further options:



On request:

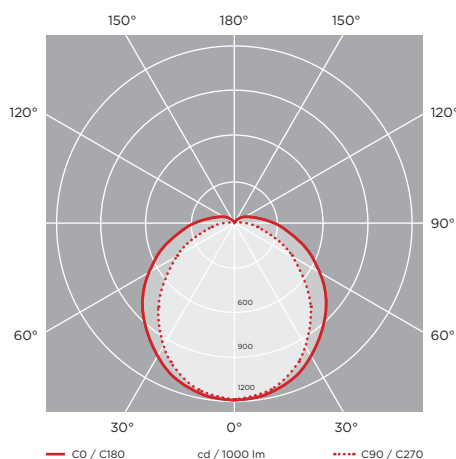


## Schematic drawing with main dimensions

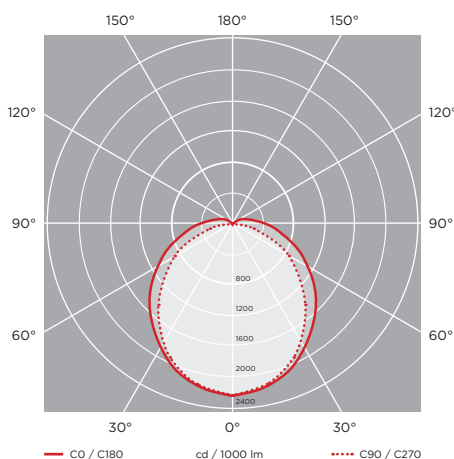


## Photometric curves:

771-Farmer, 4ft, 1x1200m,  
Lumnum Farmer HV, 23W, 3800lm,  
PMMA



771-Farmer, 5ft, 2x1500mm,  
Lumnum Farmer HV, 43W, 6600lm,  
PMMA



*Luminaire customisation and the options of advanced controls are presented on page 5*