

# 771-VENTILA

## Industrial dust and waterproof luminaires with LED modules

771-Ventila is available in the following sizes: 1x600mm, 1x1200mm, 1x1500mm, 2x600mm, 2x1200mm, 2x1500mm

### YOUR MAIN BENEFITS:

A professional solution especially **for outdoor applications**. 771-Ventila withstands the impact of adverse weather conditions (sunlight, rain, wind etc.). Ta = -20 to +35°C

Full range available in IP65 or IP66.



### FIELD OF APPLICATION:

Due to the construction principles of gasket, closing system and diffuser our fixtures ensure a high grade of protection (IP65, IP66) against dust, contamination and water permeation. In accordance with their IP grade they can be used widely to illuminate areas with dusty and humid environment.

Thanks to its **enhanced weather resistance**, 771-Ventila is especially suitable for applications, where **error-free functioning in outdoor conditions** is desired.

### TECHNICAL DESCRIPTION AND BENEFITS:

- **Housing:** It is made of flame retardant glass fibre reinforced polyester (on request suitable for 850°C glow wire test too), in light grey (RAL7035) colour. Glass fibre reinforced polyester has very good temperature resistance and mechanical stability. Furthermore it is a good electrical insulator resisting the impacts of several chemicals and weather conditions. Its stability of size and shape at changing temperatures is excellent.
- The **diffuser** is available in injection moulded **opal acrylic (PMMA)** with extremely high light permeability, well-balanced light dispersing and **weather resistance**. The diffusers are designed with respect to their optical characteristics and are **UV resistant**.
- In order to ensure **maximum heat**, chemical and weather **resistance** even under tough conditions, the **gasket** between the diffuser and housing is made of **silicone-based foam** with enhanced durability.
- **Fixing of the diffuser to the body:** with highly resistant stainless steel clips (standard or tamper-proof version).
- **Gear tray (reflector):** White powder coated steel sheet according to **Zhaga** standards or customised.
- **Electrical components:** in accordance with the requested specification suitable for LED technology. For more details please see technical data.

LED

CE

771-VENTILA

IP65



Option:

IP66



## Main technical options

Our opal diffuser has an **outstanding light transmissivity of more than 93%**. With this great light permeability, it is an **excellent choice for luminaires equipped with LED modules**.



Fixing of the diffuser to the body: With highly resistant stainless steel clips. Optionally tamper-proof clips available on request.

The opal diffusers are made of UV stabilized **opalised** material, specially developed for LED applications. This ensures among others a well-balanced light distribution and the **elimination of glare**.



The gear tray is made of white powder coated steel sheet according to **Zhaga** standards. On request customisation possible.

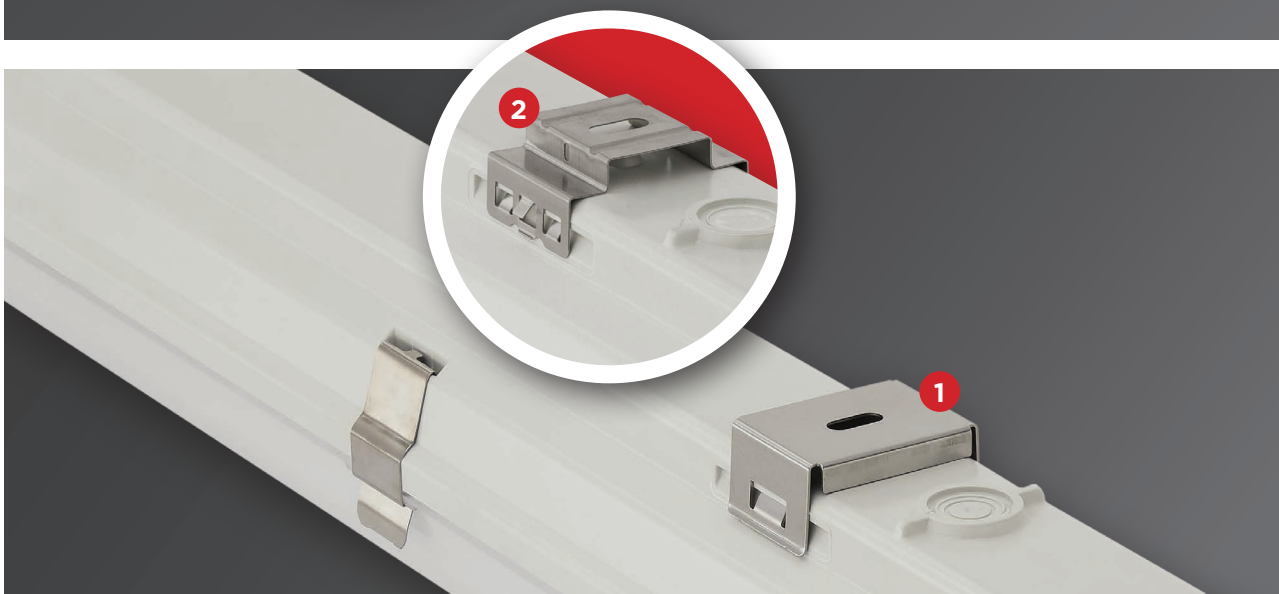


Depending on customer requirements we can reach different levels of luminous flux (lumen) and high luminous efficacy (lm/Watt) of our LED luminaires. For more details please see technical data.

In order to ensure **maximum** heat, chemical and **weather resistance** even under tough conditions, the **gasket** between the diffuser and housing is made of **silicone-based** foam with enhanced durability.



Comes with **venting cable gland** in order to prevent the build-up of moisture inside the luminaire thus avoiding its damage.



#### Ways of installing:

1. In order to withstand the outdoor weather conditions (wind, storm), we recommend to use **strengthened** stainless steel suspension brackets. They are easy to install onto the **wall and ceiling**.
2. **Usual** suspension brackets, suitable for installation onto the **ceiling**, are available on request.

## Technical data (extract)

\* EPREL database is available at <https://eprel.ec.europa.eu/screen/product/lightsources/xxxxxxx>  
(where the xxxxxx have to be substituted by the reference number given in the last column)

Products with 5 years warranty	Power (W)	Lum. total luminous flux emitted (lm)		Lum. efficacy (lm/W)		CCT (Kelvin)	CRI	Lifetime L70B50 (Ta=35°C)	Lifetime L80B10 (Ta=35°C)	A (mm)	B (mm)	Weight (kg)	EEI	Light source* (reference)
		PMMA	PC	PMMA	PC									
Lumnium EU 130 with Osram driver														
771 2ft (600mm)	24	3300	n.a.	137	n.a.	4000	>80	>72 000 h	>50 000 h	669	415	0,9	D	1059419
771 4ft (1200mm)	25	3400	n.a.	136	n.a.	4000	>80	>72 000 h	>50 000 h	1277	800	2,2	D	802364
771 5ft (1500mm)	30	4200	n.a.	140	n.a.	4000	>80	>72 000 h	>50 000 h	1577	1100	2,5	D	734821
771 4ft (1200mm)	38	5100	n.a.	134	n.a.	4000	>80	>72 000 h	>50 000 h	1277	800	2,2	D	734862
771 5ft (1500mm)	51	7000	n.a.	137	n.a.	4000	>80	>72 000 h	>50 000 h	1577	1100	2,5	D	734813
Lumnium EU PRO 160 with Osram driver														
771 4ft (1200mm)	22	3300	n.a.	150	n.a.	4000	>80	>72 000 h	>50 000 h	1277	700	2,2	C	803878
771 5ft (1500mm)	27	4200	n.a.	155	n.a.	4000	>80	>72 000 h	>50 000 h	1577	1000	2,5	C	734800
771 4ft (1200mm)	31	4800	n.a.	155	n.a.	4000	>80	>72 000 h	>50 000 h	1277	700	2,2	C	803933
771 5ft (1500mm)	41	6500	n.a.	158	n.a.	4000	>80	>72 000 h	>50 000 h	1577	1000	2,5	C	734760
Lumnium EU PRO 140 HF with Philips driver														
771 4ft (2x1200mm)**	58	8000	n.a.	138	n.a.	4000	>80	>72 000 h	>50 000 h	1277	700	2,65	D	734708
771 5ft (2x1500mm)**	73	10200	n.a.	140	n.a.	4000	>80	>72 000 h	>50 000 h	1577	1000	3	D	734742
Osram Basic Linear G3														
771 2ft (600mm)	21	2400	n.a.	119	n.a.	4000	>80	>50 000 h	>41 000 h	669	360	1,3	D	892178
771 4ft (1200mm)	23	2900	n.a.	124	n.a.	4000	>80	>50 000 h	>50 000 h	1277	700	1,8	D	892186
771 5ft (1500mm)	28	3700	n.a.	132	n.a.	4000	>80	>50 000 h	>50 000 h	1577	1000	2,2	D	892176 892186
771 4ft (1200mm)	28	3900	n.a.	140	n.a.	4000	>80	>50 000 h	>45 000 h	1277	700	2	D	892188
771 5ft (1500mm)	35	4700	n.a.	136	n.a.	4000	>80	>50 000 h	>50 000 h	1577	1000	2,2	D	892178 892188
771 4ft (2x1200mm)**	39	5300	n.a.	135	n.a.	4000	>80	>50 000 h	>43 000 h	1277	700	2,5	D	892188
771 5ft (2x1500mm)**	47	6800	n.a.	144	n.a.	4000	>80	>50 000 h	>43 000 h	1577	1000	2,7	D	892178 892188
Philips Fortimo LED Strip LV5														
771 2ft (600mm)	15	2100	n.a.	138	n.a.	4000	>80	>72 000 h	>50 000 h	669	360	1,7	C	778312
771 4ft (1200mm)	31	4500	n.a.	143	n.a.	4000	>80	>72 000 h	>50 000 h	1277	700	2,2	C	778351
771 5ft (1500mm)	38	5400	n.a.	142	n.a.	4000	>80	>72 000 h	>50 000 h	1577	1000	2,5	C	778365
771 5ft (2x1500mm)**	49	6900	n.a.	140	n.a.	4000	>80	>72 000 h	>50 000 h	1577	1000	2,7	C	778365
Philips Fortimo LED Strip HV6														
771 4ft (2x1200mm)**	56	8300	n.a.	150	n.a.	4000	>80	>100 000 h	>64 000 h	1277	700	2,65	C	893529
771 5ft (2x1500mm)**	70	10500	n.a.	150	n.a.	4000	>80	>100 000 h	>64 000 h	1577	1000	3	C	893525 893529
771 4ft (2x1200mm)**	66	10000	n.a.	153	n.a.	4000	>80	>100 000 h	>64 000 h	1277	700	2,65	C	893537
771 5ft (2x1500mm)**	83	12700	n.a.	153	n.a.	4000	>80	>100 000 h	>64 000 h	1577	1000	3	C	893533 893537

\*\* The LED strips are placed in one line in a twin (wider) housing.

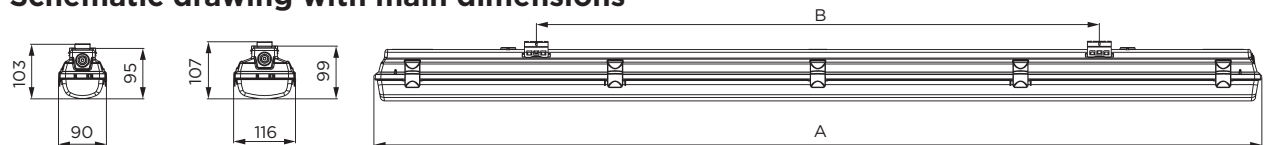
Further options:



On request:

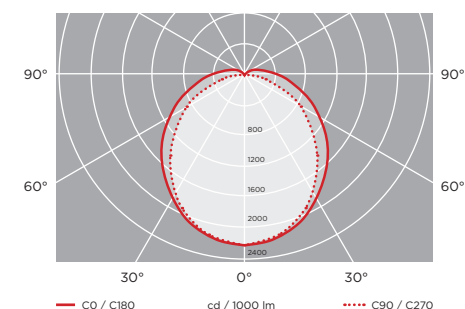


## Schematic drawing with main dimensions

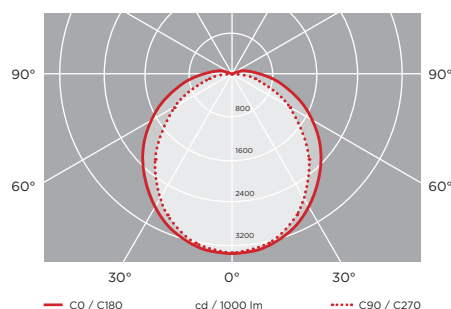


## Photometric curves:

771-Ventila 5ft (2x1500mm)  
Osram Basic Linear G3 47W 6800lm



771-Ventila 5ft (2x1500mm)  
Philips Fortimo LED Strip HV6 70W 10500lm



Luminaire customisation and the options of advanced controls are presented on page 5