

LED

# RETROFIT LED 771-PRO LT

Industrial dust and waterproof luminaires  
With 1 and 2 LED tubes.

CE

## YOUR MAIN BENEFITS:

This product family has been **designed for energy efficient LED tubes**.  
Full range available in IP65 and IP66.



GRP  
PC

GPR  
PMMA

RETROFIT LED  
771-PRO LT

IP65



## FIELD OF APPLICATION:

Thanks to the construction principals of gasket, closing system and diffuser our fixtures ensure a high grade of protection (IP65, IP66) against dust, contamination and water permeation. In accordance with their IP grade they can be widely used to illuminate spaces with dusty and humid environment.

When using outdoors, the fittings should be protected against direct sunlight and adverse weather conditions. Under 0°C the application of venting cable gland is necessary, as well as silicone gasket is strongly recommended.

## TECHNICAL DESCRIPTION AND BENEFITS:

■ **Housing:** It is made of flame retardant glass fibre reinforced polyester (**GRP**) – on request suitable for 850°C glow wire test too –, in light grey (RAL7035) colour. This material has very good temperature resistance, mechanical stability, furthermore it is a good electrical insulator, it resists the impacts of several chemicals and the impacts of weather conditions. Its stability of size and shape at changing temperatures is excellent.

■ The **diffuser** is available in the following versions:

### Injection moulded acrylic (PMMA):

transparent, with longitudinal prisms, designed with respect to their optical characteristics.

Main advantages of PMMA: very good transparency (better than the transparency of glass), unique nonaging properties, **high chemical** and **UV-resistance**.

### Injection moulded polycarbonate (PC):

transparent, with longitudinal internal prisms, designed with respect to their optical characteristics.

Main advantages of PC: **high mechanical strength** and **high heat and shock resistance**.

■ **The gasket** between the diffuser and housing is made of non-aging PU (polyurethane) foam. Silicone-based foam with enhanced resistance is optionally available.

■ **Fixing the diffuser to the body:** with stainless steel clips.

■ **Gear tray** (reflector): white powder coated steel sheet.

■ **Way of installing:** with stainless steel mounting brackets (easy-to-install) onto the wall or ceiling or suspended.

■ **Electrical components:** The adequate power supply is ensured through electronic driver, that is built in into the LED tube.

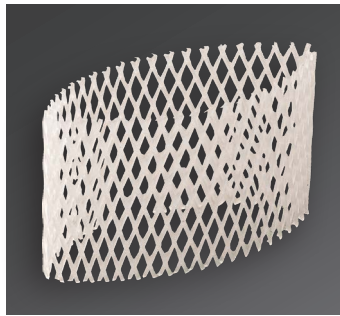
Option:

IP66



## Main technical options

Optimised economical packaging with plastic net. On request traditional carton box or retail-box packaging is available.



Retrofit LED 771-Pro LT has been designed for LED tubes.

The **transparent prismatic diffusers** are designed with respect to their optical characteristics and are UV resistant.



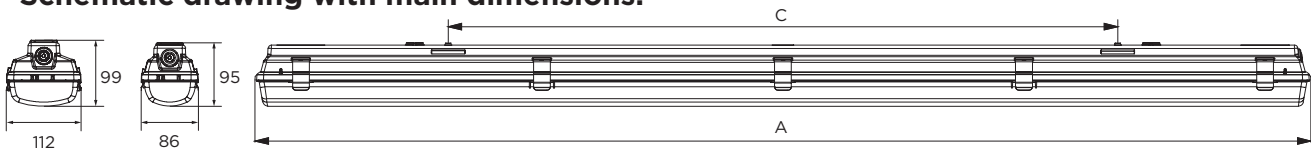
**Fixing the diffuser to the body:** with highly resistant stainless steel clips.

**RETROFIT LED  
771-PRO LT**

## Technical data (extract)

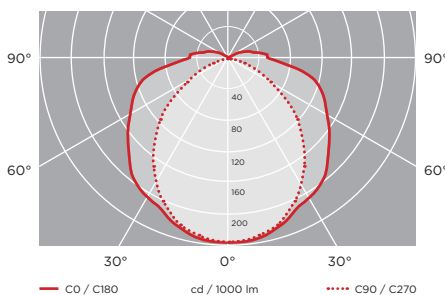
| Type  | Lampholder | Power (W) | Luminous flux (lm) | Dimensions A (mm) | C (mm) | Weight (kg) |
|---|------------|-----------|--------------------|-------------------|--------|-------------|
| <b>771-Pro LT equipped with Retrofit LED tube (Philips Core Pro LED tube)</b> |            |           |                    |                   |        |             |
| 771-Pro LT 1x600mm  | T8/G13     | 1x8       | 680*               | 699               | 360    | 1,19        |
| 771-Pro LT 1x1200mm   | T8/G13     | 1x14,5    | 1360*              | 1277              | 700    | 2,47        |
| 771-Pro LT 1x1500mm   | T8/G13     | 1x20      | 1870*              | 1577              | 1000   | 2,57        |
| 771-Pro LT 2x600mm  | T8/G13     | 2x8       | 1360*              | 699               | 360    | 2,31        |
| 771-Pro LT 2x1200mm   | T8/G13     | 2x14,5    | 2720*              | 1277              | 700    | 3,35        |
| 771-Pro LT 2x1500mm   | T8/G13     | 2x20      | 3740*              | 1577              | 1000   | 3,37        |

## Schematic drawing with main dimensions:



## Photometric curves:

Retrofit LED 771-Pro LT  
1x1200mm 1x14,5W (LED tube)



Retrofit LED 771-Pro LT  
2x1500mm 2x20W (LED tube)

