

771-FAVOURITE

Industrial dust and waterproof luminaires with LED modules

Now with a new, opalised diffuser with unique light transmissivity!
Specially developed for LED applications



FIELD OF APPLICATION:

Thanks to the construction principles of gasket, closing system and diffuser our LED fixtures ensure a high grade of protection (IP65, IP66 or IP67) against dust, contamination and water permeation. In accordance with their IP grade they can be widely used to illuminate spaces with dusty and humid environment.

When using outdoors, the fittings should be protected against direct sunlight and adverse weather conditions. Under 0°C the application of venting cable gland is necessary, as well as silicone gasket is strongly recommended.

TECHNICAL DESCRIPTION AND BENEFITS:

- **Housing:** It is made of flame retardant glass fibre reinforced polyester (on request suitable for 850°C glow wire test too), in light grey (RAL7035) colour. Glass fibre reinforced polyester has very good temperature resistance, mechanical stability, furthermore it is a good electrical insulator, it resists the impacts of several chemicals and the impacts of weather conditions. Its stability of size and shape at changing temperatures is excellent.
- **Diffuser:** Our LED luminaires with **opal** diffuser offer you:
 - **extremely high light efficiency** through high **light permeability, unique on the market**, (up to 93% light transmissivity)
 - an **excellent light uniformity** through **well-balanced light dispersing** (no shadows)
 - **elimination of the dazzling effect** (no glare)
 - **aesthetical appearance (no dots of the single LEDs)**
 - **keeping the usual, well-known features of the diffuser** such as chemical and heat resistance, mechanical features, **UV stabilization** etc.

Available in PC - injection moulded **Polycarbonate** (high mechanical strength and high heat and shock resistance) **or in Acrylic** - injection moulded **PMMA** (unique non-aging properties, high chemical resistance).

- The **gasket** between the diffuser and the housing is available in two versions:
 - **Injected silicone-based endless foam**
 - **Non-aging PU (polyurethane) endless foam**
- **Fixing the diffuser to the body:** with highly resistant clips made of **stainless steel** (standard or tamper-proof).
- **Gear tray (reflector):** White powder coated steel sheet according to **Zhaga** standards or customised.
- **Electrical components:** The adequate power supply is ensured through electronic driver, that is built into the luminaire.

Main technical options

Our opal diffuser has an **outstanding light transmissivity** up to **93%**. With this great light permeability, it is an **excellent choice for luminaires equipped with LED modules**.



Usual stainless steel clips for **SELV** (Safety Extra Low Voltage) solutions.

The opal diffusers are made of UV stabilized **opalised** material, specially developed for LED applications. This ensures among others a well-balanced light distribution and the **elimination of glare**.

The special tamper-proof stainless steel clips for **non-SELV (HV)** solutions can not be released with bare hands.



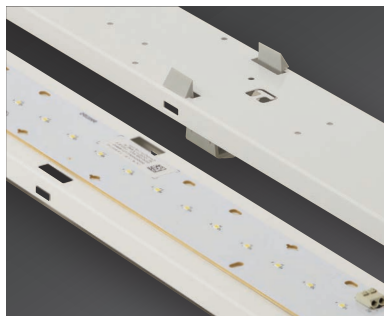
With 771-Favourite - depending on customer requirements - we can reach different levels of luminous flux (lumen) as well as luminous efficacy (lm/Watt). Details see: Technical data.



In order to optimise the thermal management of the luminaire we avoid the direct contact of the gear tray and driver, thus increasing the lifetime of the modules and driver.



LED Version with motion sensor



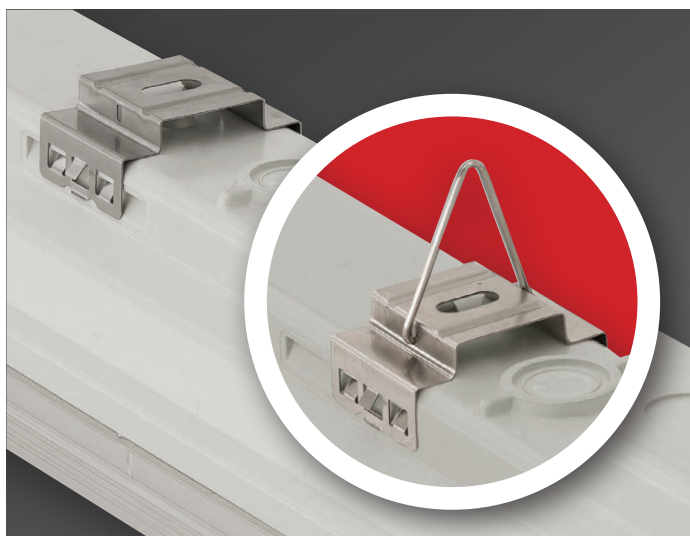
The gear tray is made of white powder coated steel sheet according to **Zhaga** standards. On request customisation possible.



Light sources suffer from degradation in light output over time. **The CLO feature enables LED solutions to deliver constant lumen output through the life of the light engine.**

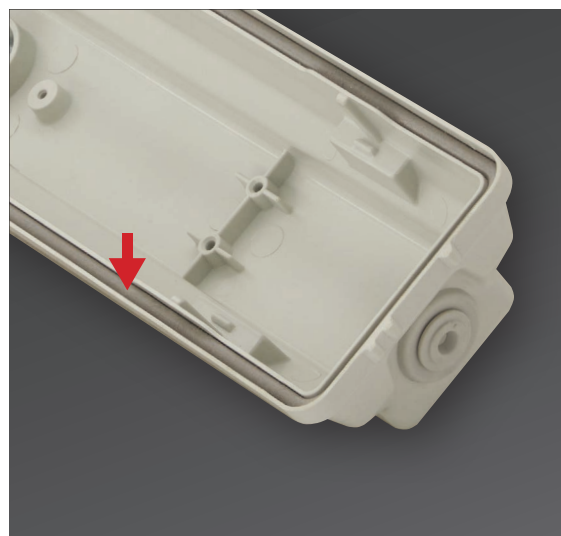
Option: The **Rapid Connector** enables the electrical connection **without disassembling** the luminaire, thus **avoiding** a potential damage of the LED's inside the luminaire through **electrostatic discharge (ESD)**.

771-FAVOURITE



Ways of installing:

1. With stainless steel suspension brackets (easy-to-install) onto the ceiling.
2. Suspension on chains with stainless steel suspension brackets mounted with hooks.



In order to ensure **maximum heat**, chemical and weather **resistance** even under tough conditions, the **gasket** between the diffuser and housing is made of **silicon-based** foam with enhanced resistance.

Technical data (extract)

* EPREL data base is available at <https://eprel.ec.europa.eu/screen/product/lightsources/xxxxxxx>
(where the xxxxxx have to be substituted by the reference number given in the last column)

Products with 5 years warranty	Power (W)	Lum. total luminous flux emitted (lm)		Lum. efficacy (lm/W)		CCT (Kelvin)	CRI	Lifetime L70B50 (Ta=35°C)	Lifetime L80B10 (Ta=35°C)	A (mm)	B (mm)	Weight (kg)	EEL	Light source* (reference)
		PMMA	PC	PMMA	PC									

Lumium EU 130 with Osram driver

771 2ft (600mm)	24	3300	3000	137	125	4000	>80	>72 000 h	>50 000 h	669	415	0,9	D	1059419
771 4ft (1200mm)	25	3400	3200	136	130	4000	>80	>72 000 h	>50 000 h	1277	800	2,2	D	802364
771 5ft (1500mm)	30	4200	4000	140	133	4000	>80	>72 000 h	>50 000 h	1577	1100	2,5	D	734821
771 4ft (1200mm)	38	5100	4900	134	129	4000	>80	>72 000 h	>50 000 h	1277	800	2,2	D	734862
771 5ft (1500mm)	51	7000	6600	137	129	4000	>80	>72 000 h	>50 000 h	1577	1100	2,5	D	734813

Lumium EU PRO 160 with Osram driver

771 4ft (1200mm)	22	3300	3200	150	145	4000	>80	>72 000 h	>50 000 h	1277	700	2,2	C	803878
771 5ft (1500mm)	27	4200	4000	155	148	4000	>80	>72 000 h	>50 000 h	1577	1000	2,5	C	734800
771 4ft (1200mm)	31	4800	4600	155	148	4000	>80	>72 000 h	>50 000 h	1277	700	2,2	C	803933
771 5ft (1500mm)	41	6500	6200	158	151	4000	>80	>72 000 h	>50 000 h	1577	1000	2,5	C	734760

Lumium EU PRO 140 HF with Philips driver

771 4ft (2x1200mm)**	58	8000	7500	138	129	4000	>80	>72 000 h	>50 000 h	1277	700	2,65	D	734708
771 5ft (2x1500mm)**	73	10200	9600	140	131	4000	>80	>72 000 h	>50 000 h	1577	1000	3	D	734742

Osram Basic Linear G3

771 2ft (600mm)	21	2400	2300	119	112	4000	>80	>50 000 h	>41 000 h	669	360	1,3	D	892178
771 4ft (1200mm)	23	2900	2800	124	119	4000	>80	>50 000 h	>50 000 h	1277	700	1,8	D	892186
771 5ft (1500mm)	28	3700	3500	132	126	4000	>80	>50 000 h	>50 000 h	1577	1000	2,2	D	892176 892186
771 4ft (1200mm)	28	3900	3700	140	134	4000	>80	>50 000 h	>45 000 h	1277	700	2	D	892188
771 5ft (1500mm)	35	4700	4500	136	130	4000	>80	>50 000 h	>50 000 h	1577	1000	2,2	D	892178 892188
771 4ft (2x1200mm)**	39	5300	5000	135	127	4000	>80	>50 000 h	>43 000 h	1277	700	2,5	D	892188
771 5ft (2x1500mm)**	47	6800	6400	144	136	4000	>80	>50 000 h	>43 000 h	1577	1000	2,7	D	892178 892188

Philips Fortimo LED Strip LV5

771 2ft (600mm)	15	2100	2000	138	131	4000	>80	>72 000 h	>50 000 h	669	360	1,7	C	778312
771 4ft (1200mm)	31	4500	4300	143	136	4000	>80	>72 000 h	>50 000 h	1277	700	2,2	C	778351
771 5ft (1500mm)	38	5400	5200	142	136	4000	>80	>72 000 h	>50 000 h	1577	1000	2,5	C	778365
771 5ft (2x1500mm)**	49	6900	6500	140	128	4000	>80	>72 000 h	>50 000 h	1577	1000	2,7	C	778365

Philips Fortimo LED Strip HV6

771 4ft (2x1200mm)**	56	8300	7800	150	141	4000	>80	>100 000 h	>64 000 h	1277	700	2,65	C	893529
771 5ft (2x1500mm)**	70	10500	9900	150	141	4000	>80	>100 000 h	>64 000 h	1577	1000	3	C	893525 893529
771 4ft (2x1200mm)**	66	10000	9400	153	144	4000	>80	>100 000 h	>64 000 h	1277	700	2,65	C	893537
771 5ft (2x1500mm)**	83	12700	12000	153	145	4000	>80	>100 000 h	>64 000 h	1577	1000	3	C	893533 893537

** The LED strips are placed in one line in a twin (wider) housing.

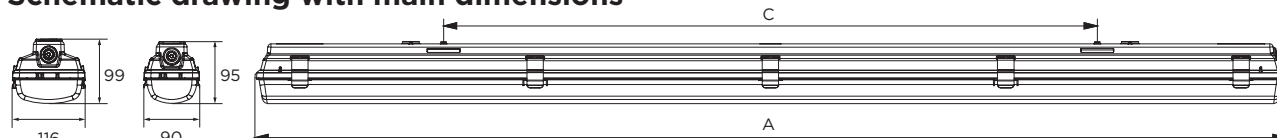
Further options:



On request:

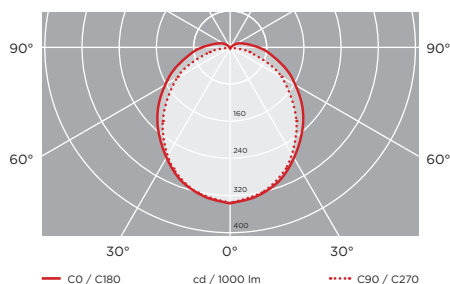


Schematic drawing with main dimensions



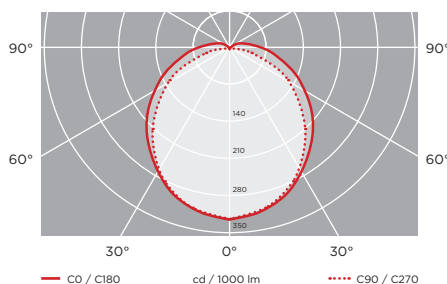
Photometric curves:

771-Favourite, 5ft (2x1500mm),
Osram Basic Linear G3, 47W, 6800lm, PMMA



Photometric curves:

771-Favourite, 5ft (2x1500mm),
Philips Fortimo LED Strip HV6, 70W, 10500lm, PMMA



Luminaire customisation and the options of advanced controls are presented on page 5